

AG/LF

**AG/LF**



**AG/LF**

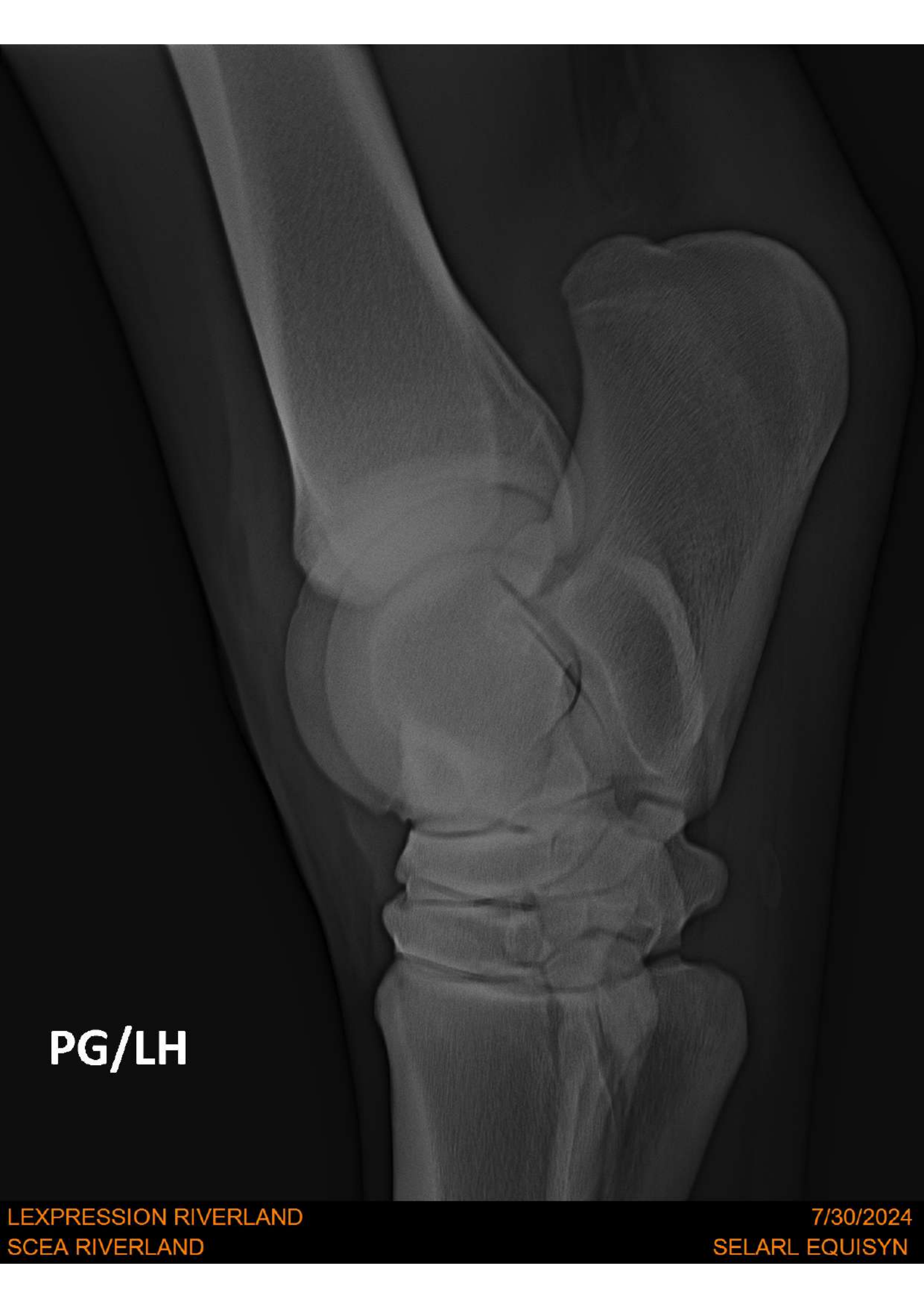


An anteroposterior (AP) radiograph of a horse's hock joint. The image shows the distal femur at the top, the two trochanters in the middle, and the distal tibia at the bottom. The joint space is visible between the bones. The text 'PG/LH' is printed in white on the right side of the image.

PG/LH

PG/LH

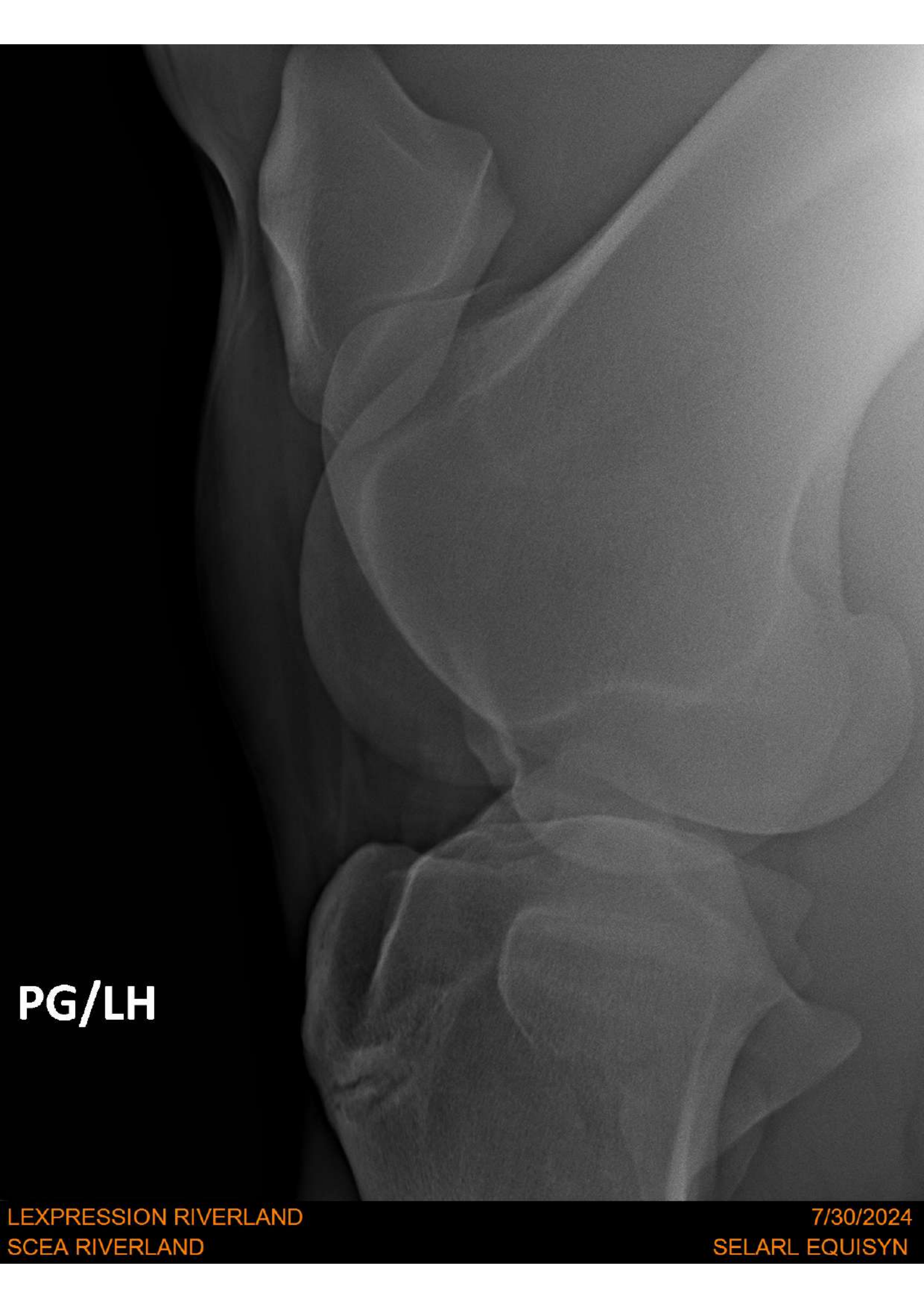




**PG/LH**



**PG/LH**



**PG/LH**

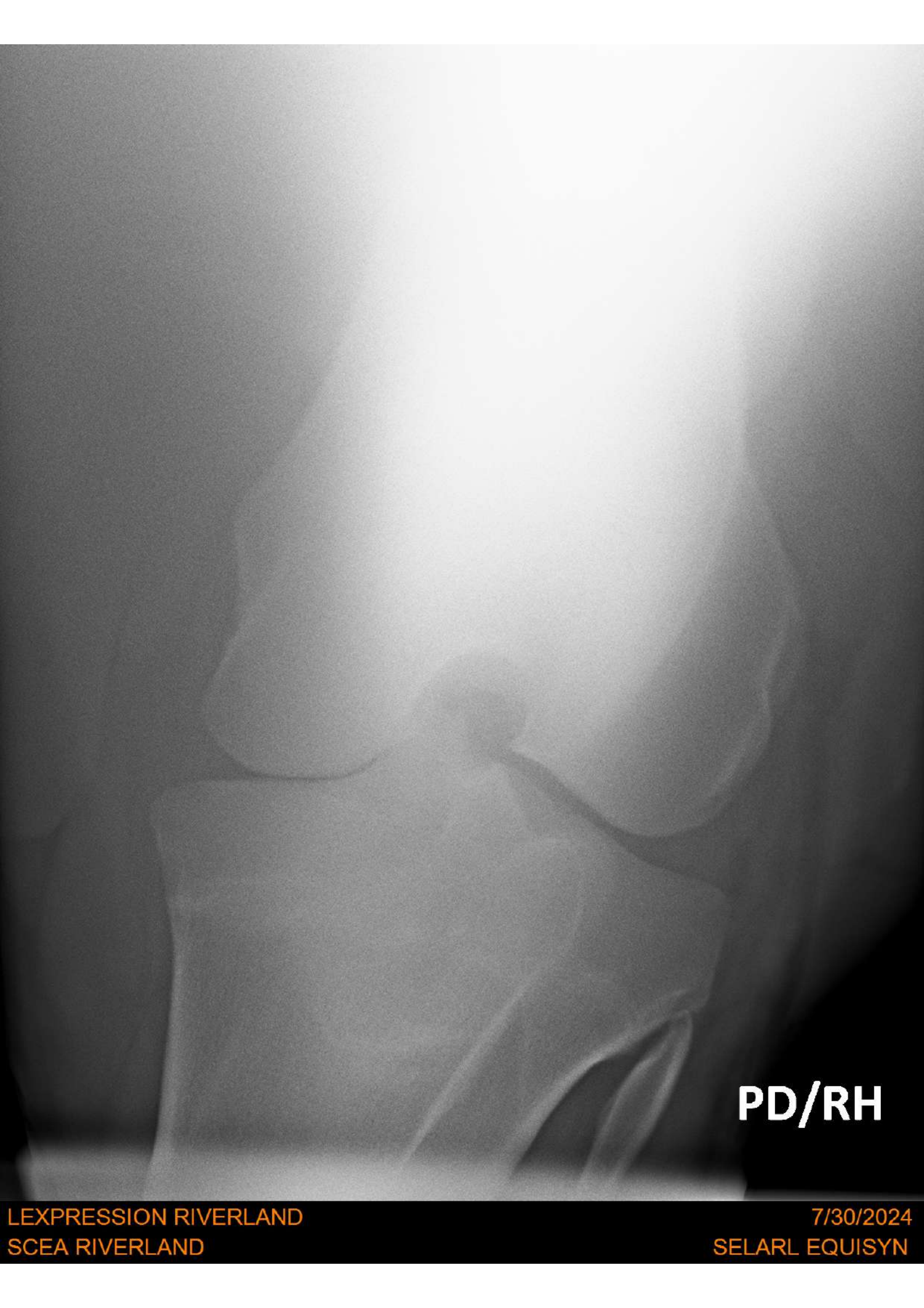




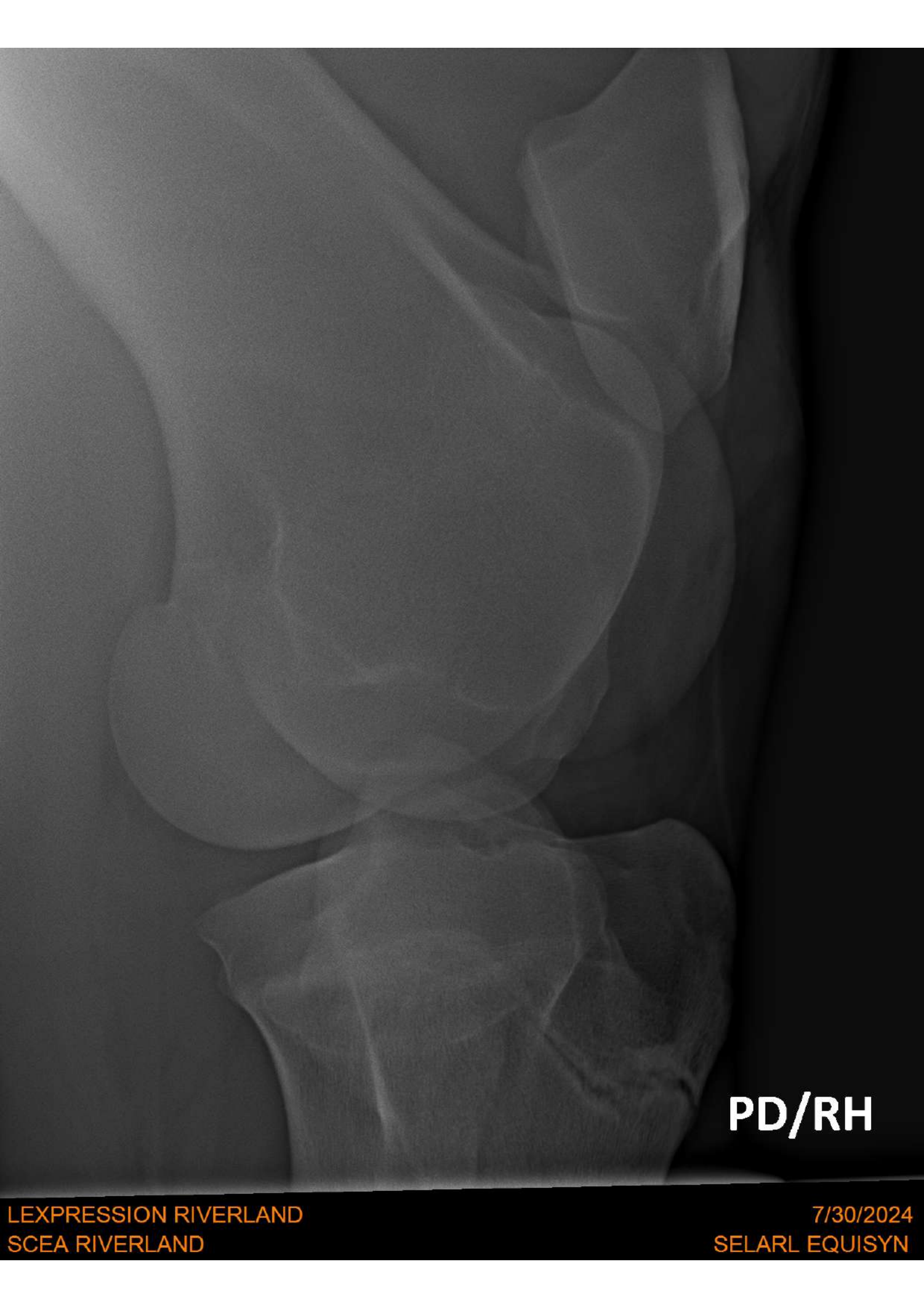
**PG/LH**

L'EXPRESSION RIVERLAND  
SCEA RIVERLAND

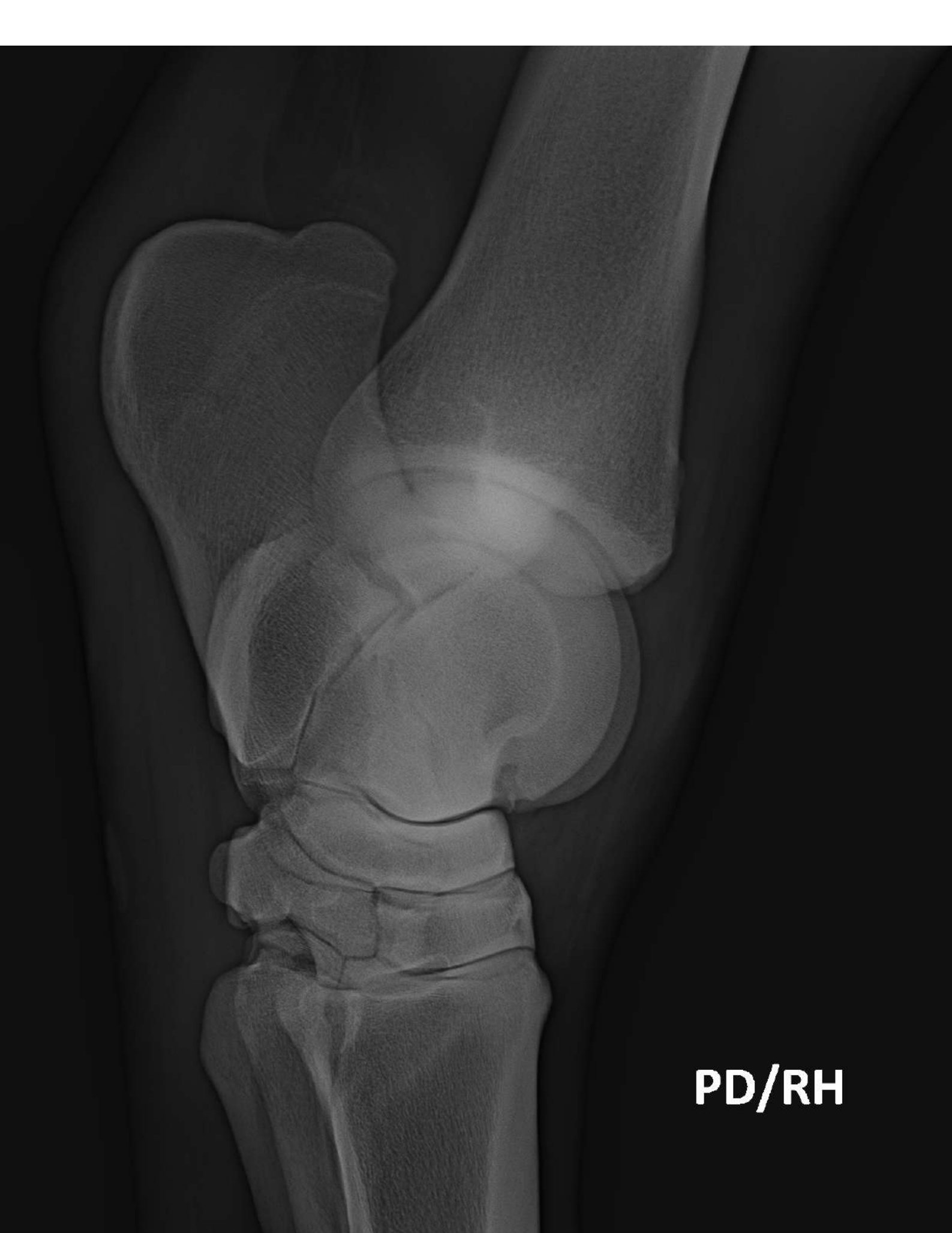
7/30/2024  
SELARL EQUISYN



**PD/RH**



**PD/RH**



**PD/RH**



**PD/RH**

PD/RH

PD/RH



**AD/RF**



**AD/RF**



AD/RF

AG/LF

AD/RF

L'EXPRESSION  
RIVERLAND

8/2/2024  
SELARL EQUISYN