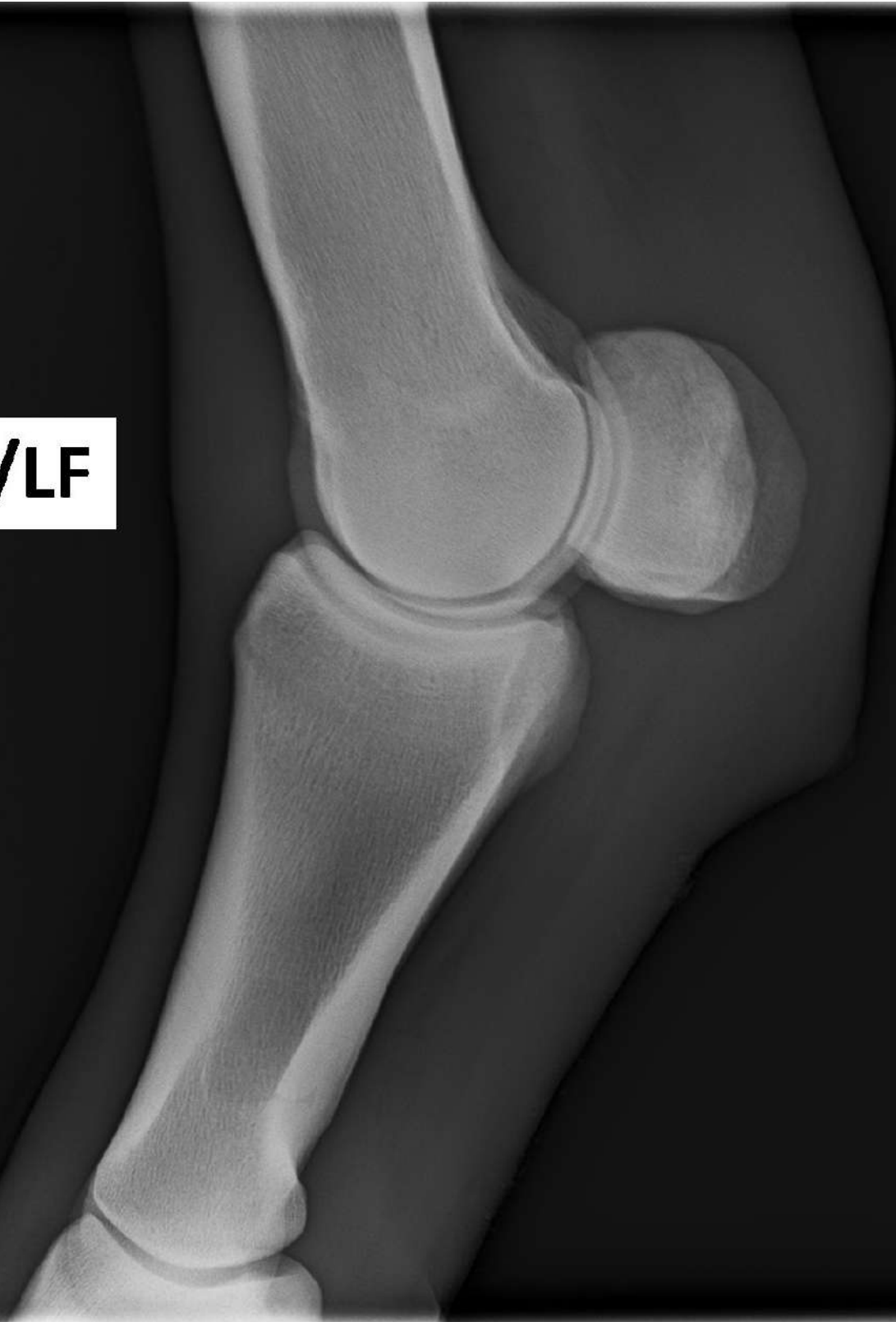


**AG/LF**



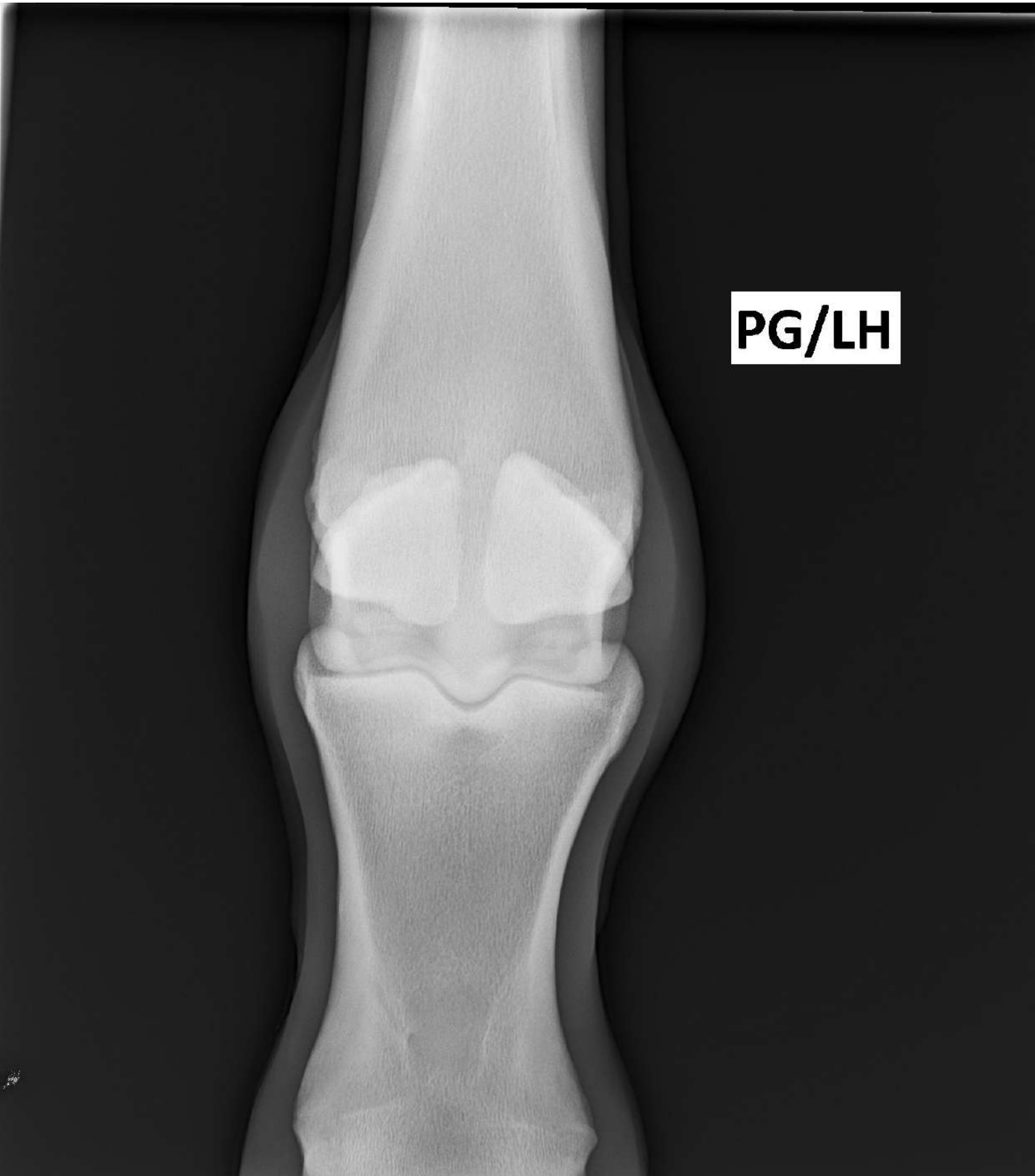


AG/LF

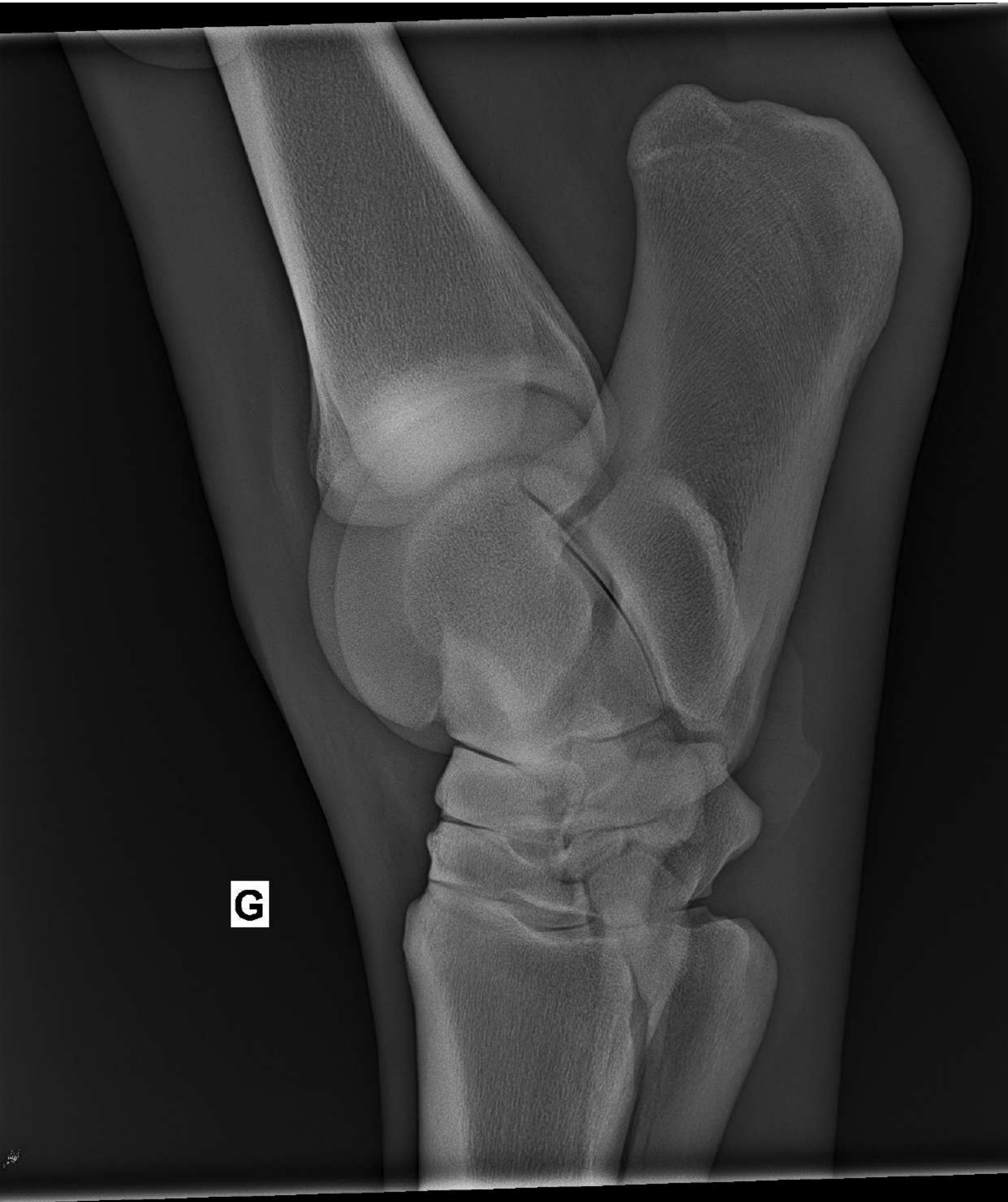
This is an anteroposterior (AP) radiograph of a knee joint. The image shows the distal femur at the top and the proximal tibia below it. A total knee replacement is visible, consisting of a femoral component on the distal femur and a tibial component on the proximal tibia. The patella is also visible in the center. The joint space is well-defined, and there is no obvious evidence of loosening or fracture. The label 'AG/LF' is located in the upper right quadrant of the image.

**PG/LH**

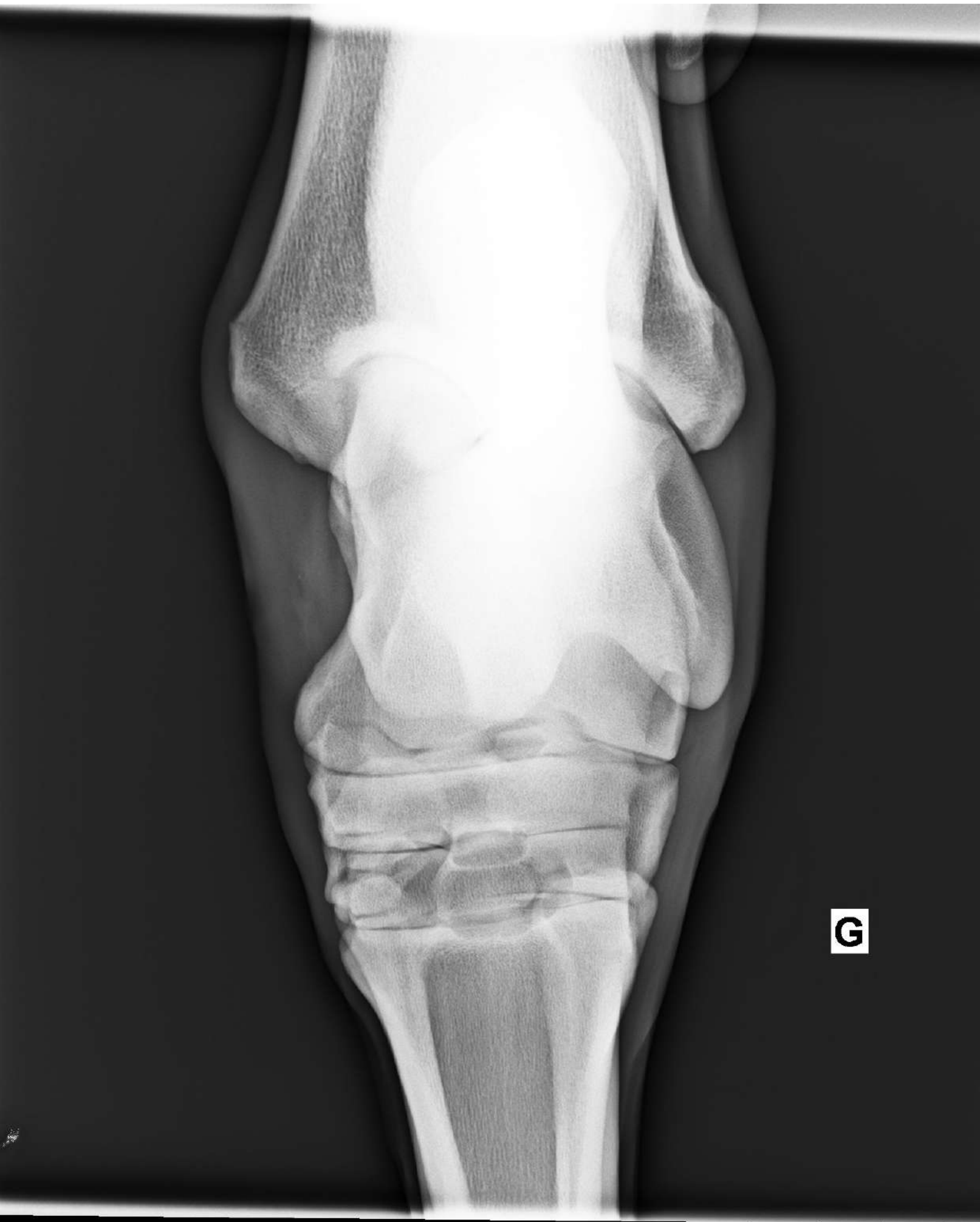




**PG/LH**



**G**



G

A black and white photograph showing a close-up of a person's legs wearing denim jeans. The person is sitting, and the focus is on the texture of the fabric and the fit of the jeans. A white rectangular box with a black border is overlaid on the lower left portion of the image, containing the letter 'G' in a bold, black, sans-serif font.

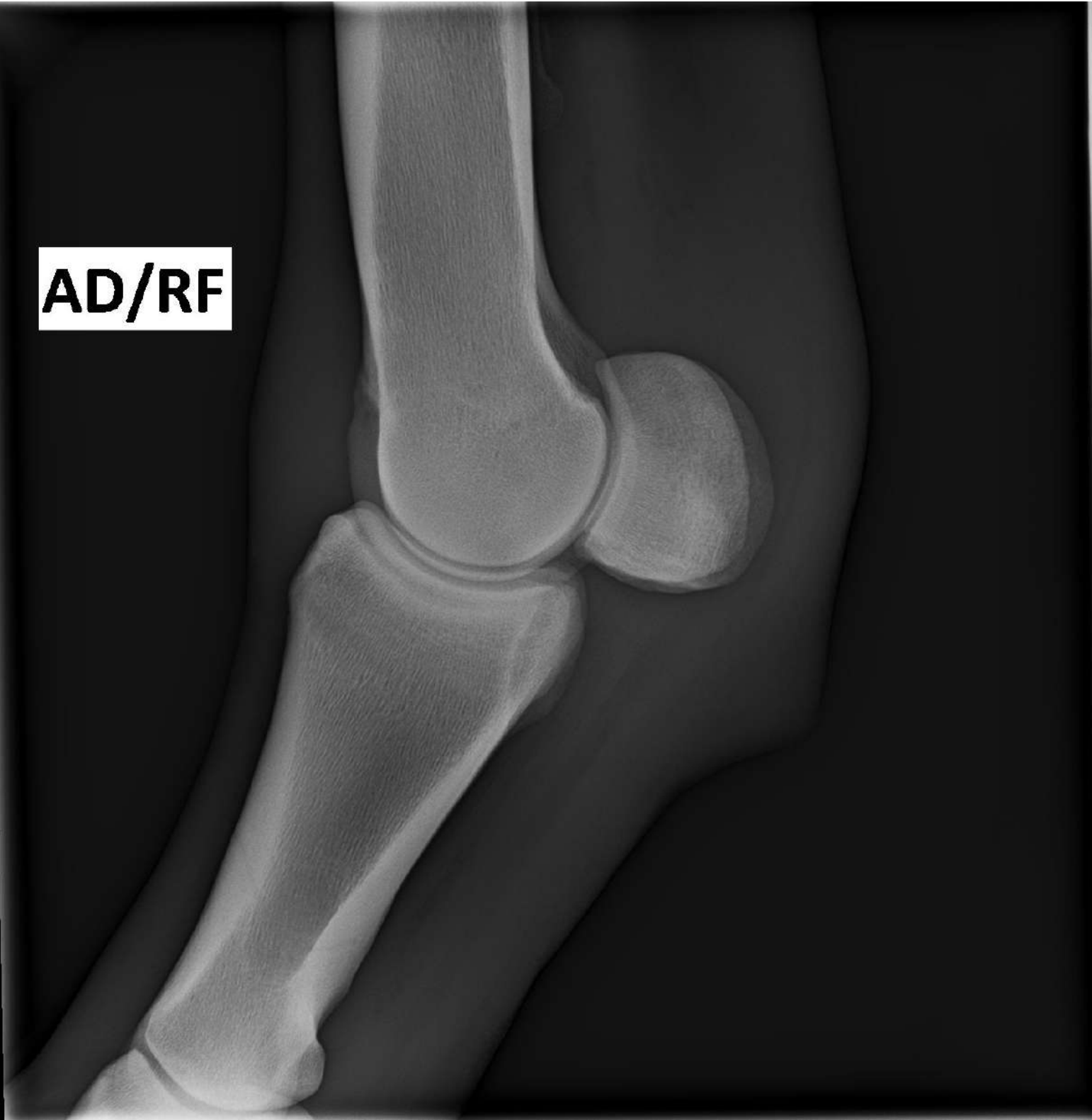
**G**



**G**



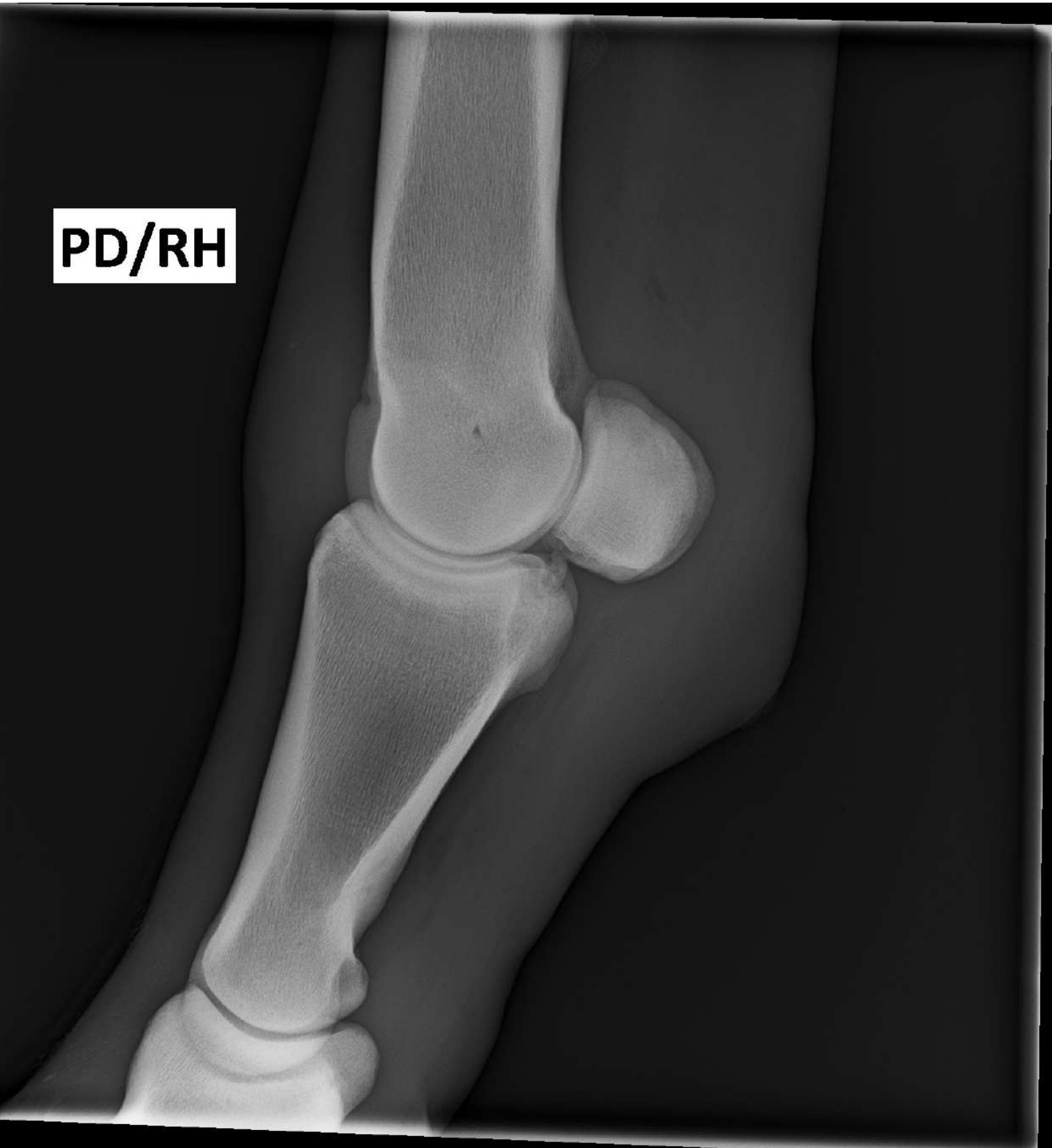
**AD/RF**



**D**

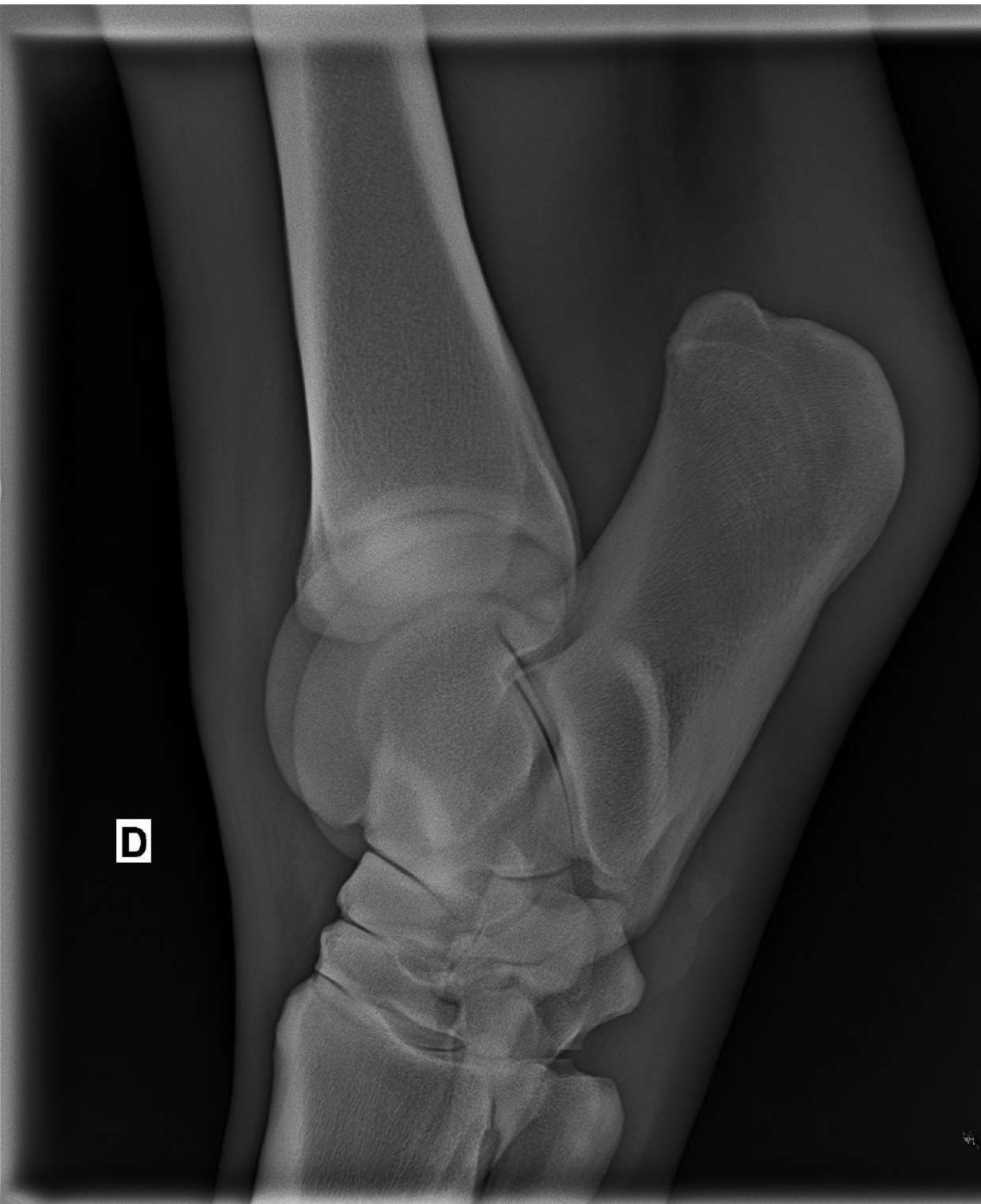


**PD/RH**



PD/RH





**D**

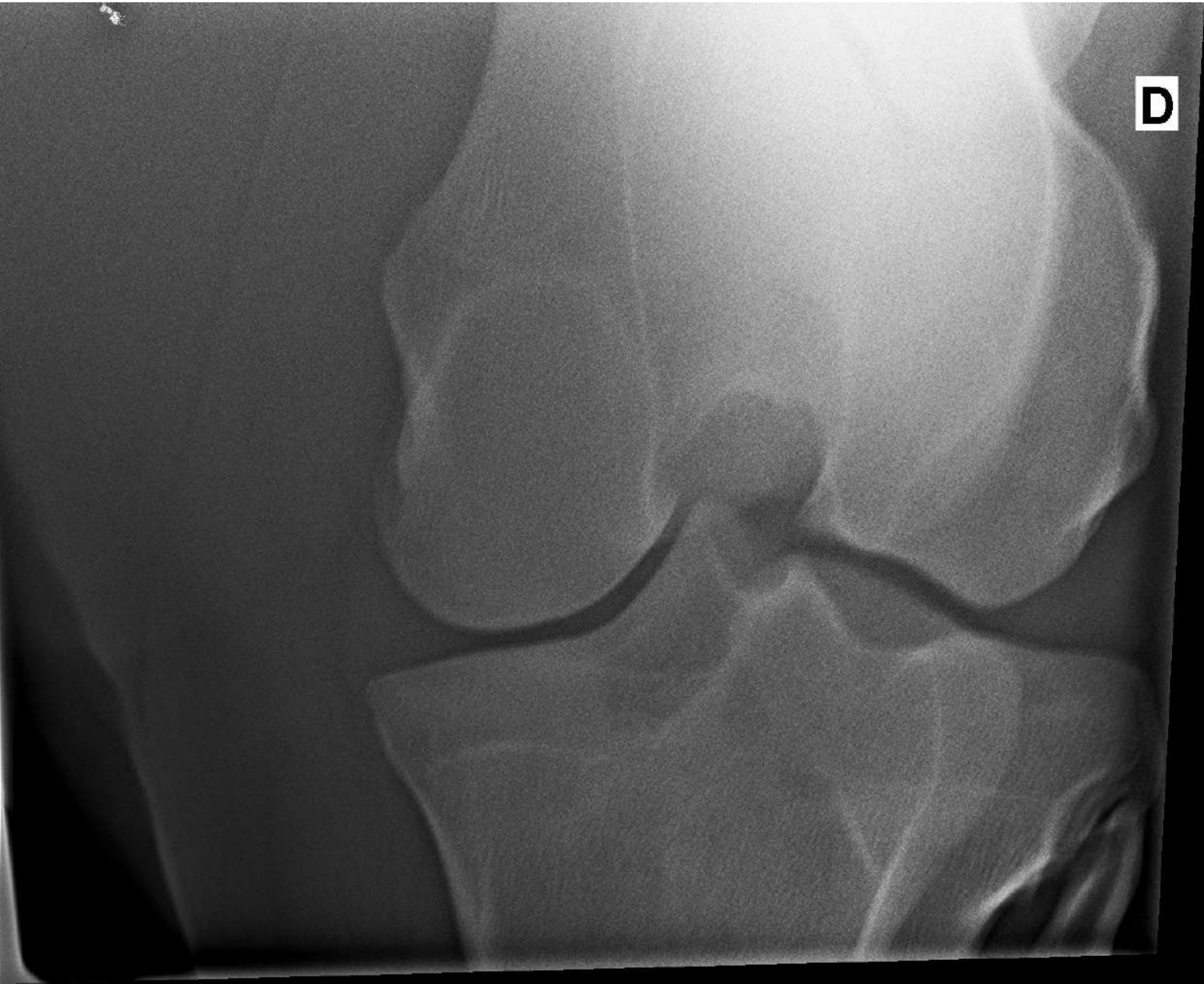


**D**



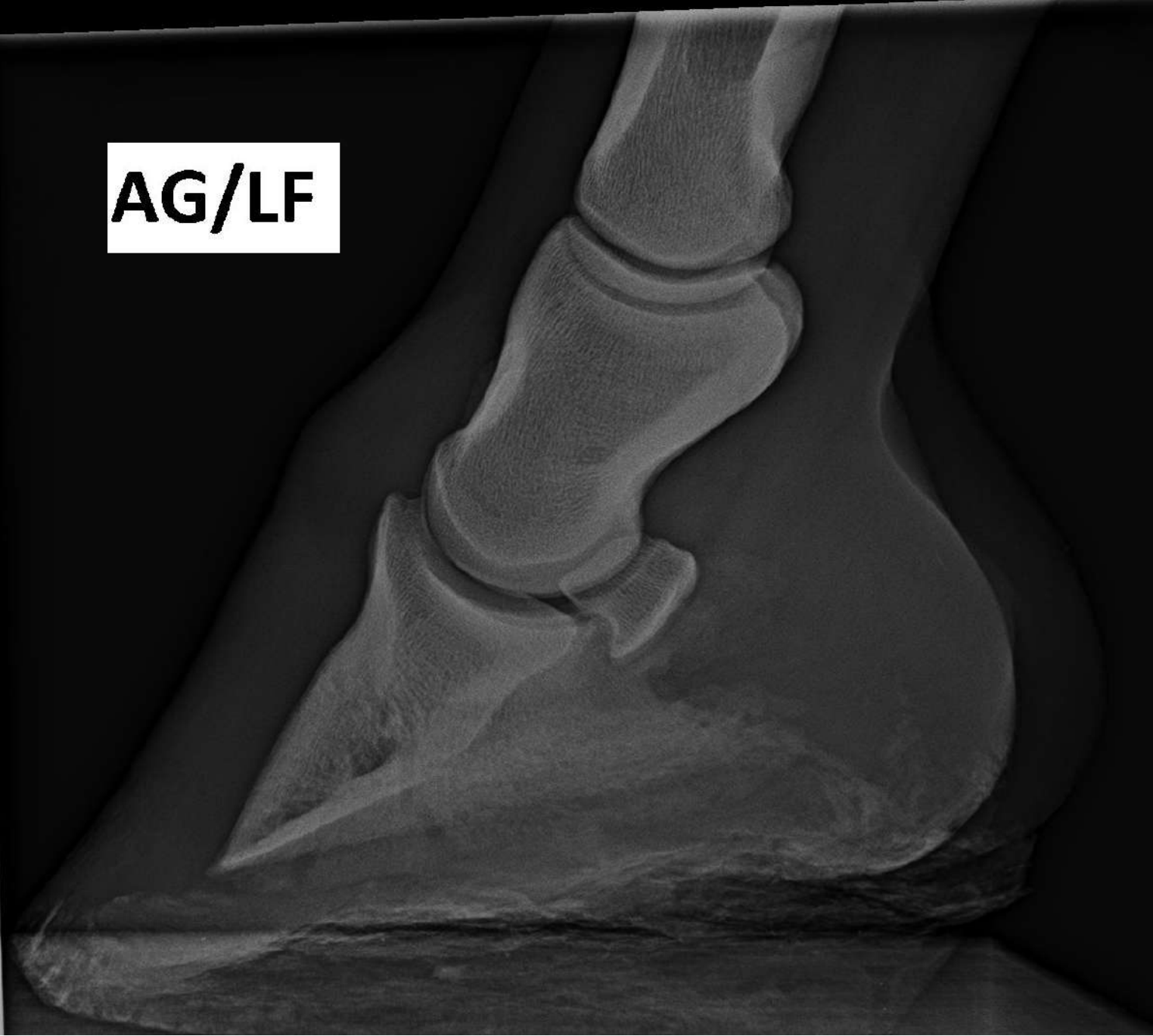
**D**

**D**





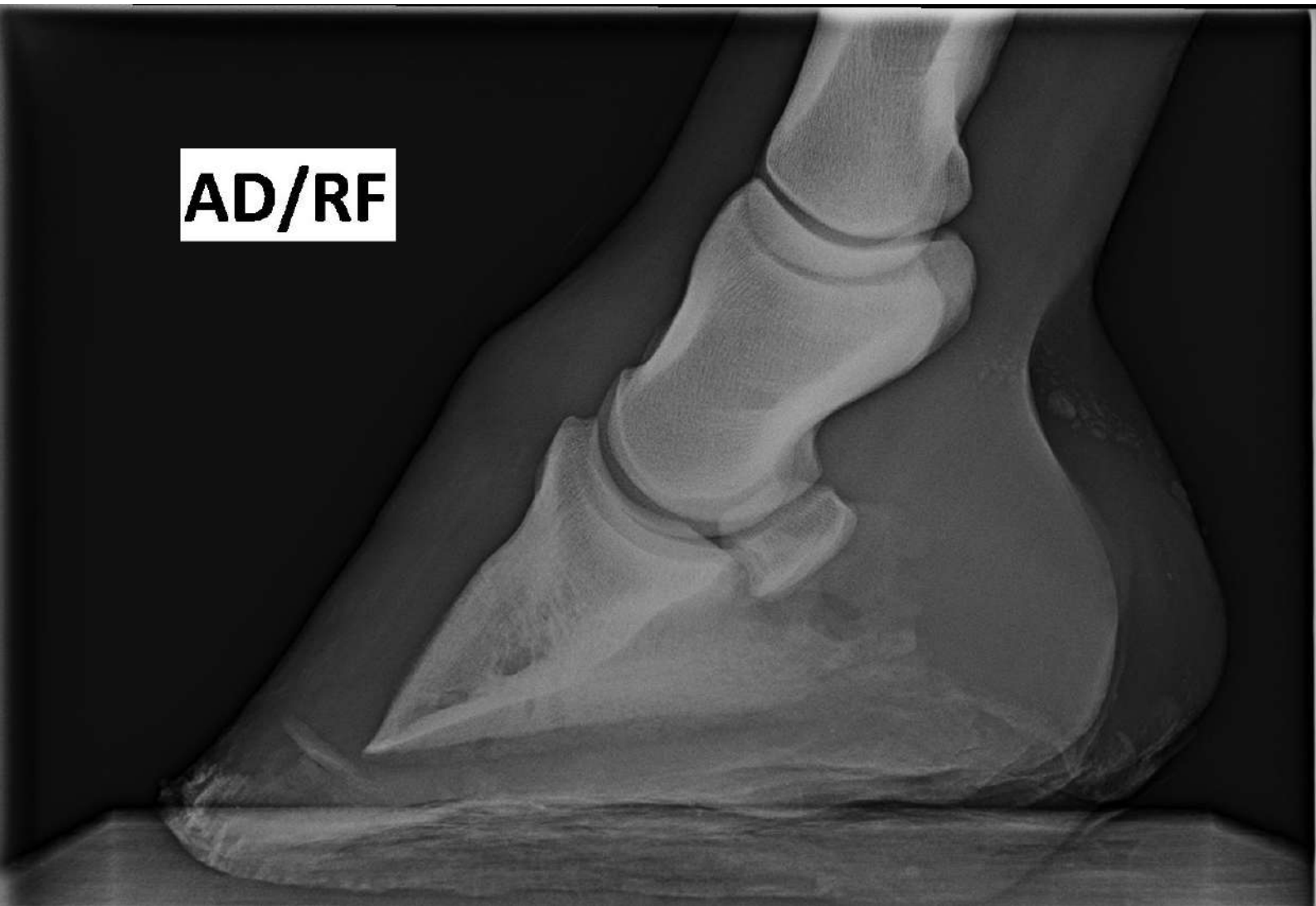
**AG/LF**



**AG/LF**



**AD/RF**



**AD/RF**

