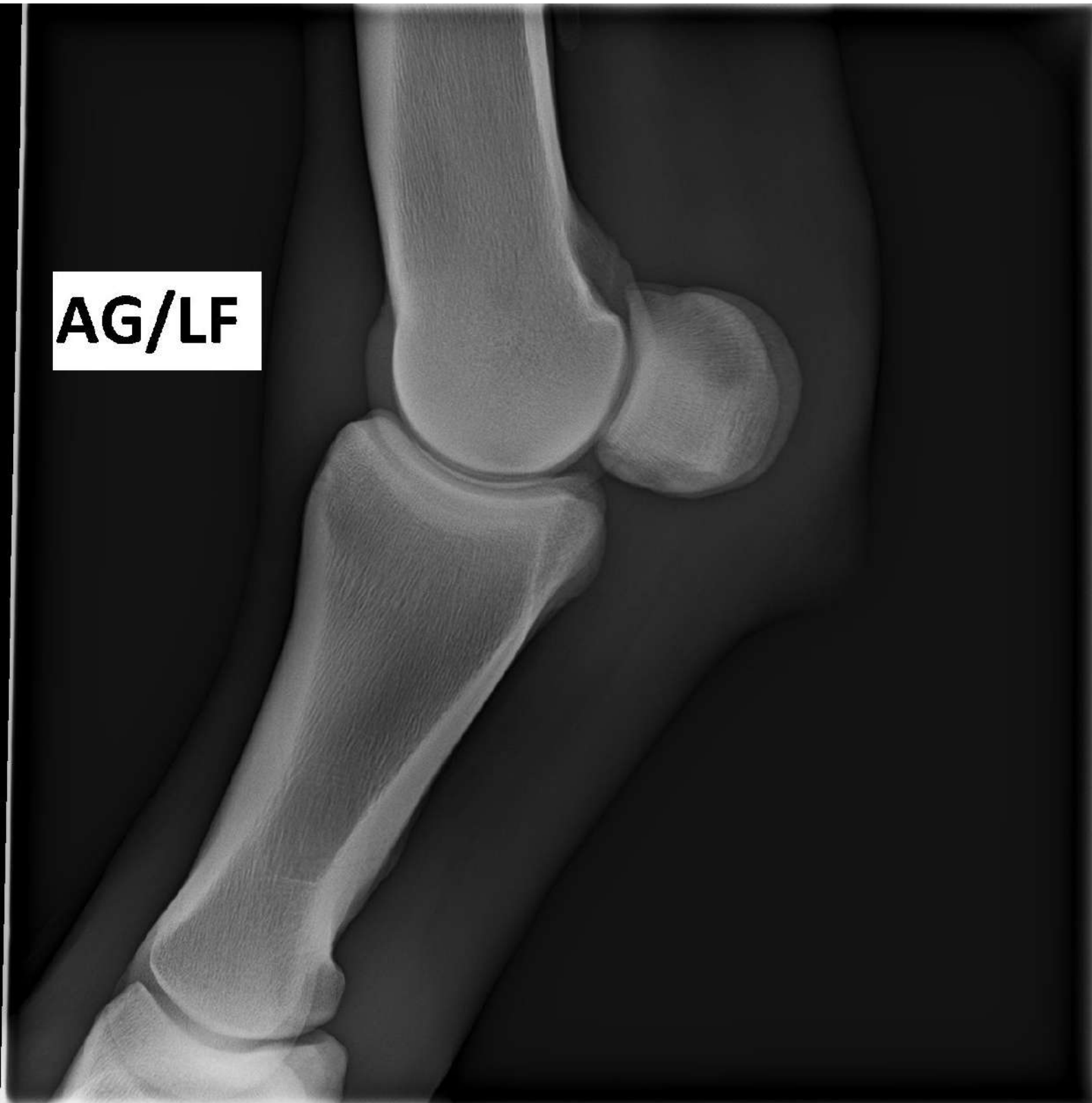


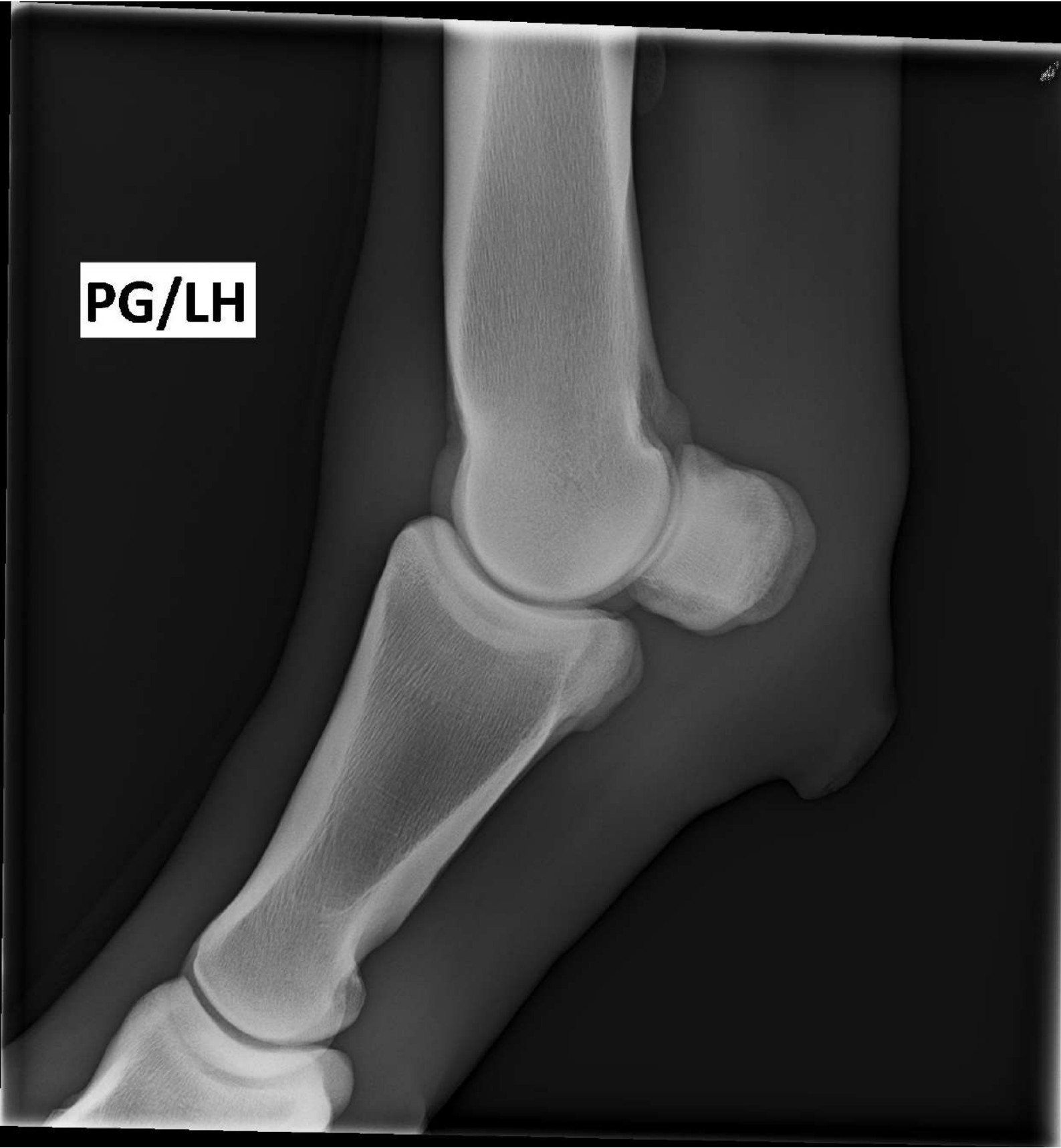
AG/LF



AG/LF



PG/LH





PG/LH



PG/LH



PG/LH

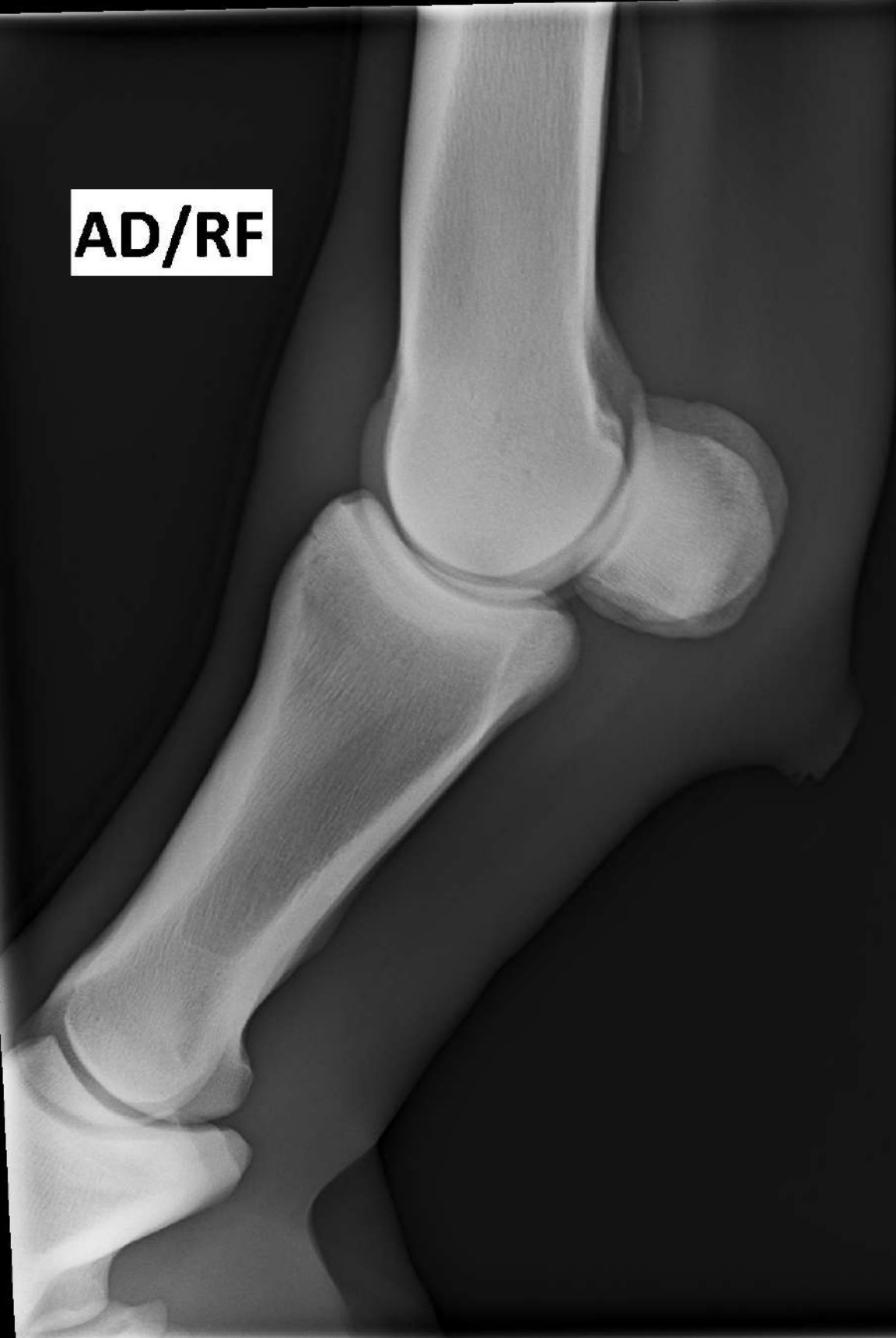
A black and white photograph showing a close-up of a person's legs wearing denim jeans. The lighting is dramatic, with the right side of the image being very bright and the left side being dark. A white letter 'G' is printed inside a black square on the left side of the image.

G



PG/LH

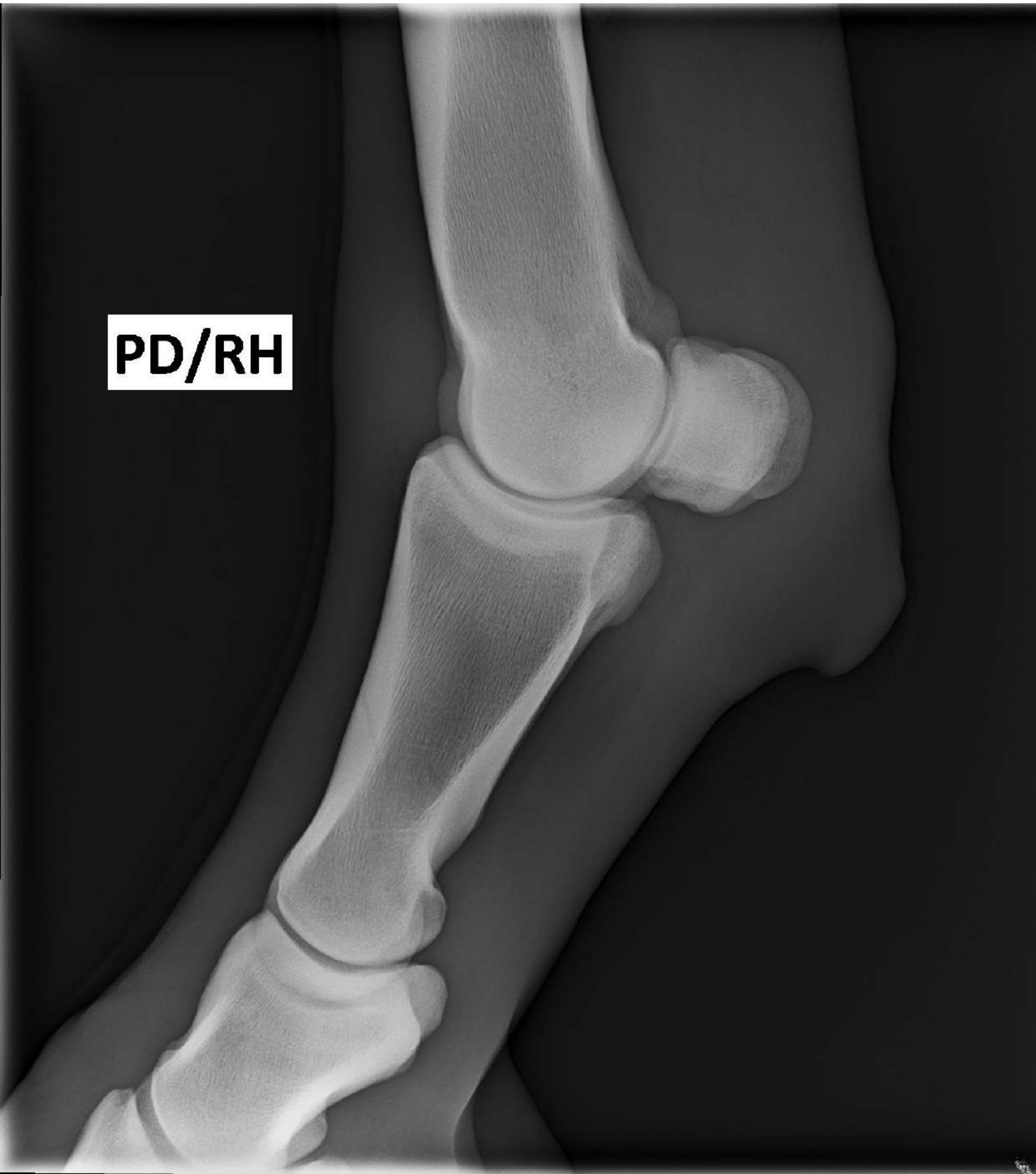
AD/RF





AD/RF

PD/RH



PD/RH





PD/RH

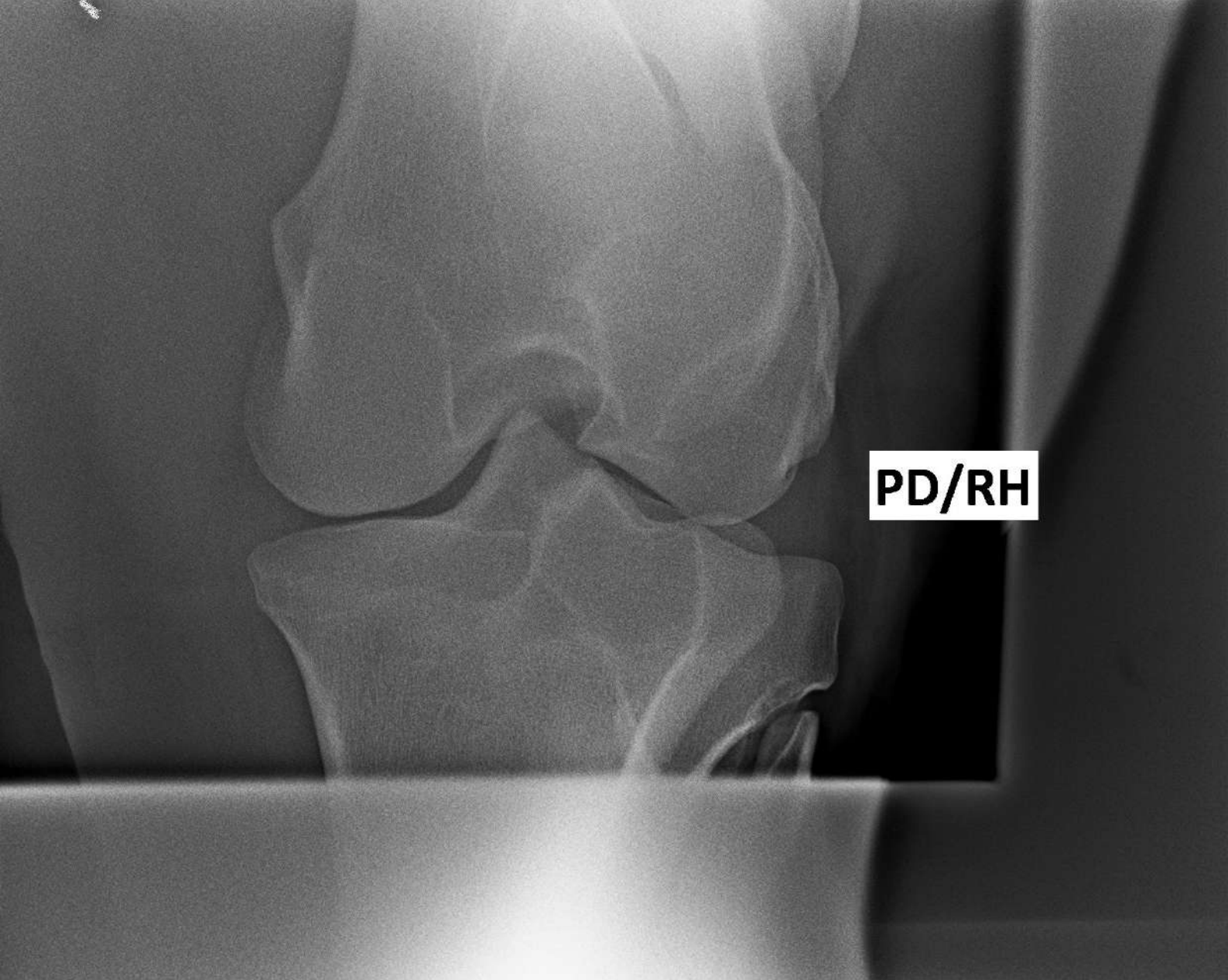
This is an anteroposterior (AP) radiograph of a right knee joint. The image shows the distal femur at the top, the patella on the right side, and the proximal tibia and fibula at the bottom. The joint space is visible, and there are no obvious fractures or dislocations. The text 'PD/RH' is located in the lower-left corner of the image.



PD/RH

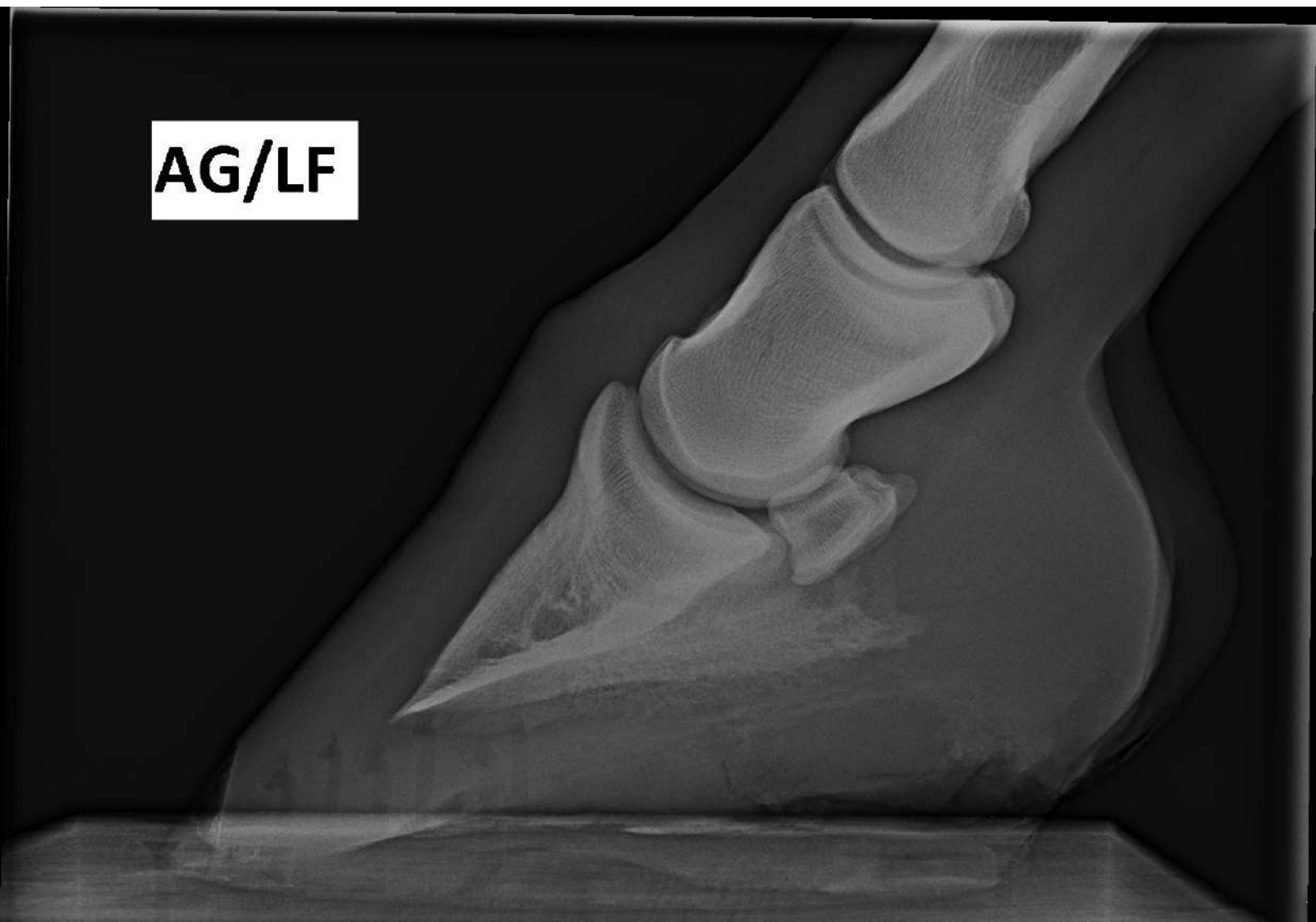


PD/RH



PD/RH

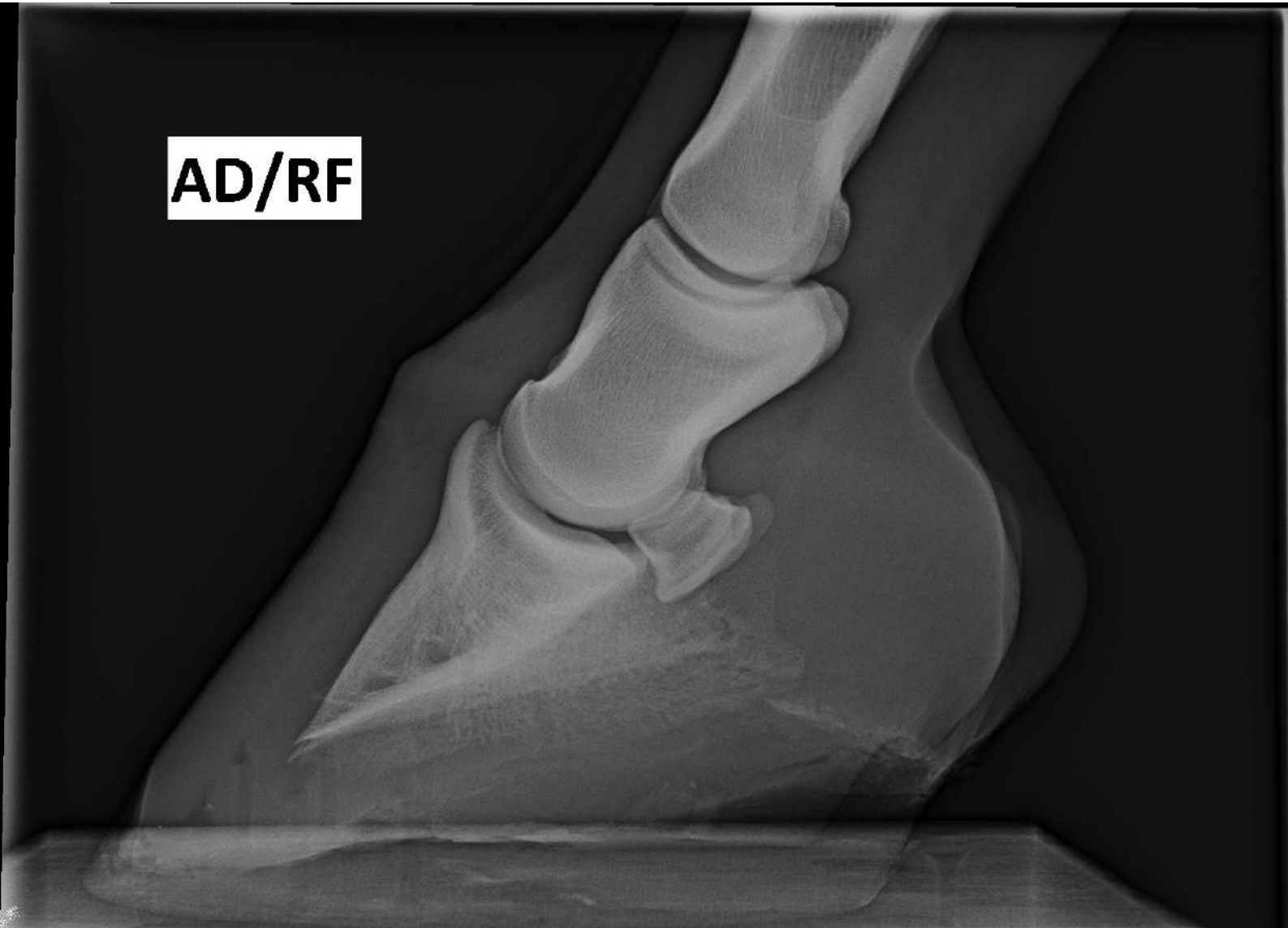
AG/LF



AG/LF



AD/RF



AD/RF

