



AG/LF

LE CHEF MOUCHE SIJU
ELEVAGE DE SIJU

11/18/2024 12:00:00 AM
BOULET ANT FACE G

AG/LF



LE CHEF MOUCHE SIJU
ELEVAGE DE SIJU

11/18/2024 12:00:00 AM
BOULET ANT PROFIL G

PG/LH

LE CHEF MOUCHE SIJU
ELEVAGE DE SIJU

11/18/2024 12:00:00 AM
BOULET POST FACE GAUCHE

PG/LH



LE CHEF MOUCHE SIJU
ELEVAGE DE SIJU

11/18/2024 12:00:00 AM
BOULET POST PROFIL GAUCHE



PG/LH



PG/LH



PG/LH

LE CHEF MOUCHE SIJU
ELEVAGE DE SIJU

11/18/2024 12:00:00 AM
GRASSET PROFIL GAUCHE



PG/LH

LE CHEF MOUCHE SIJU
ELEVAGE DE SIJU

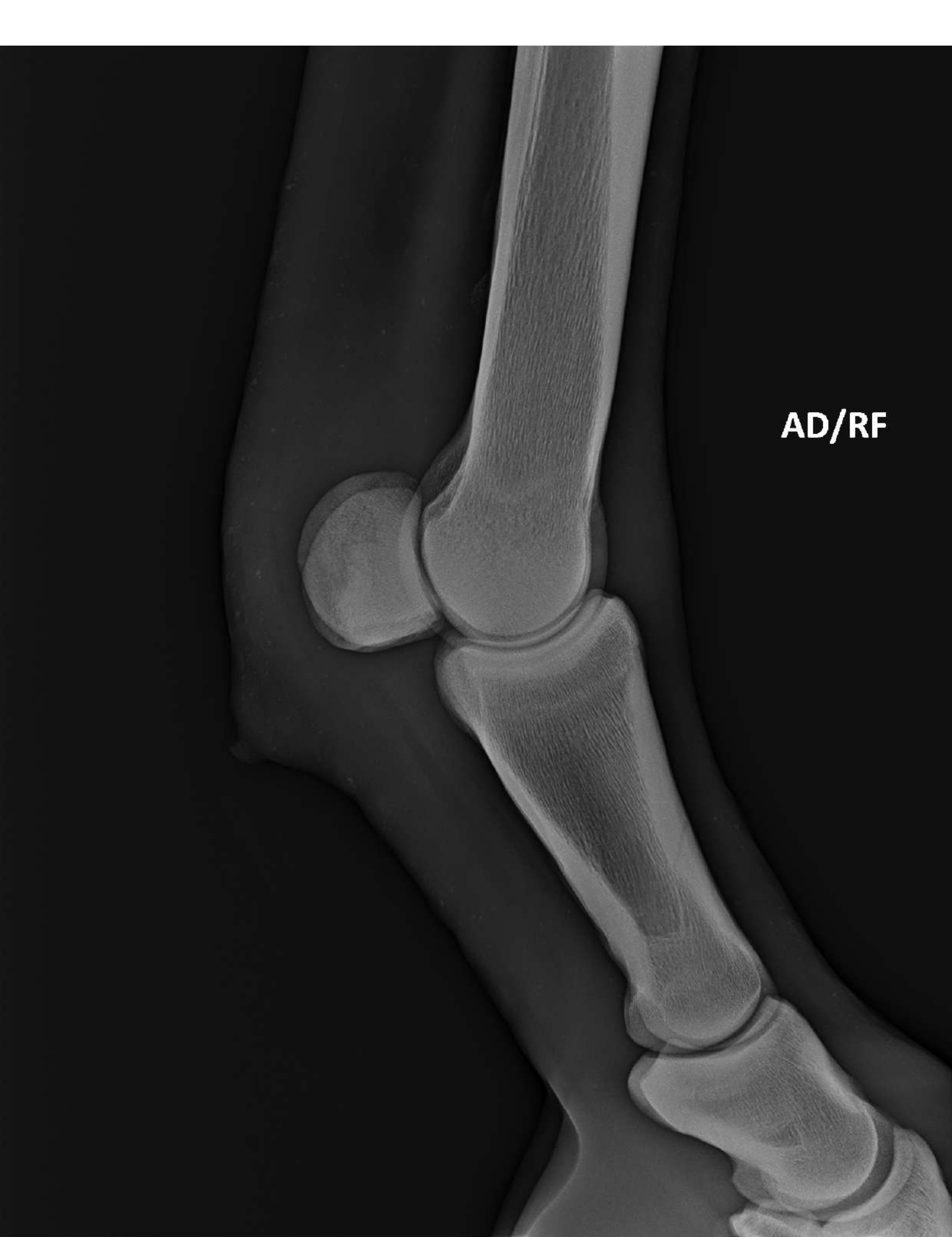
11/18/2024 12:00:00 AM
GRASSET FACE GAUCHE

AD/RF



LE CHEF MOUCHE SIJU
ELEVAGE DE SIJU

11/18/2024 12:00:00 AM
BOULET ANT FACE D



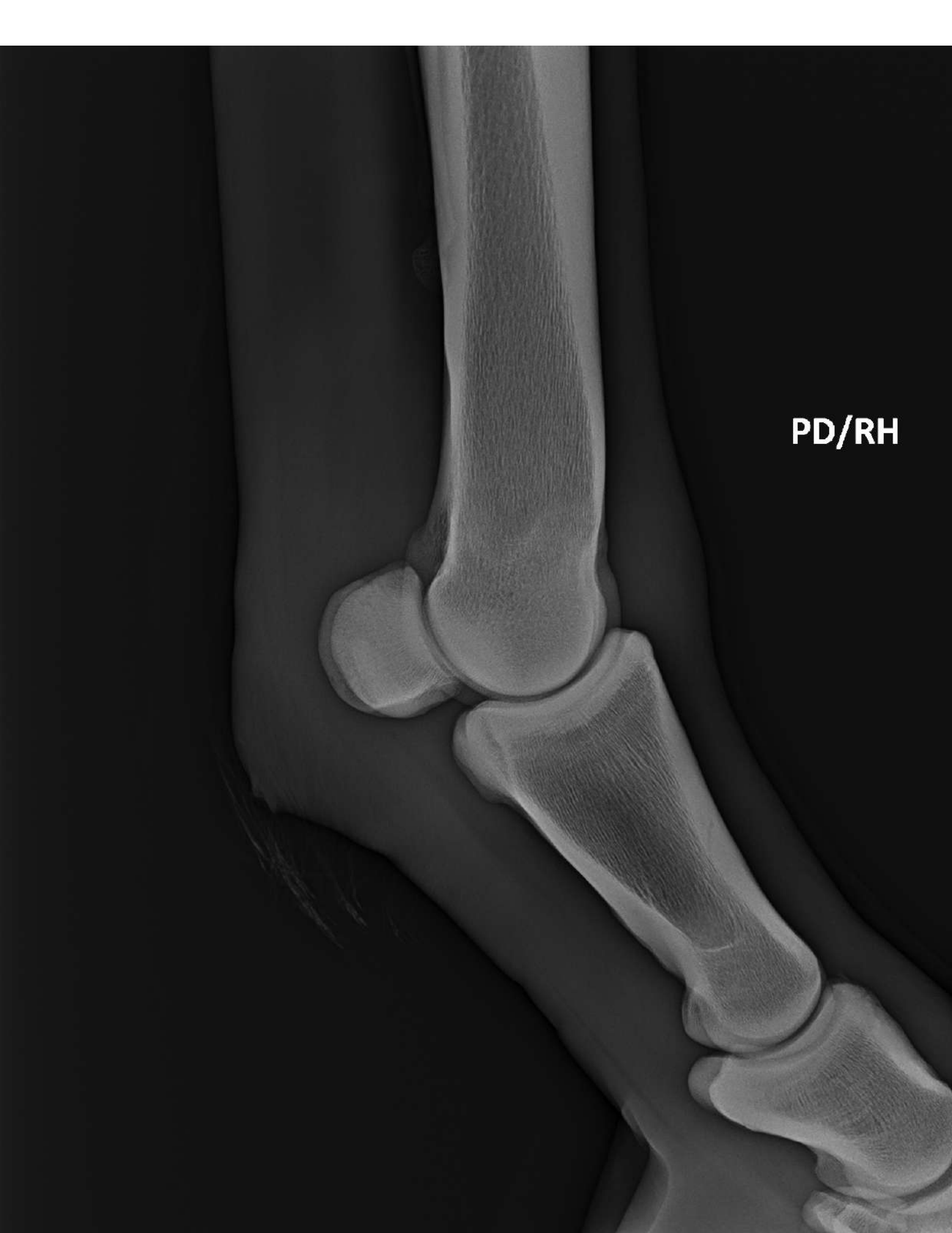
AD/RF

LE CHEF MOUCHE SIJU
ELEVAGE DE SIJU

11/18/2024 12:00:00 AM
BOULET ANT PROFIL D

PD/RH





PD/RH

PD/RH





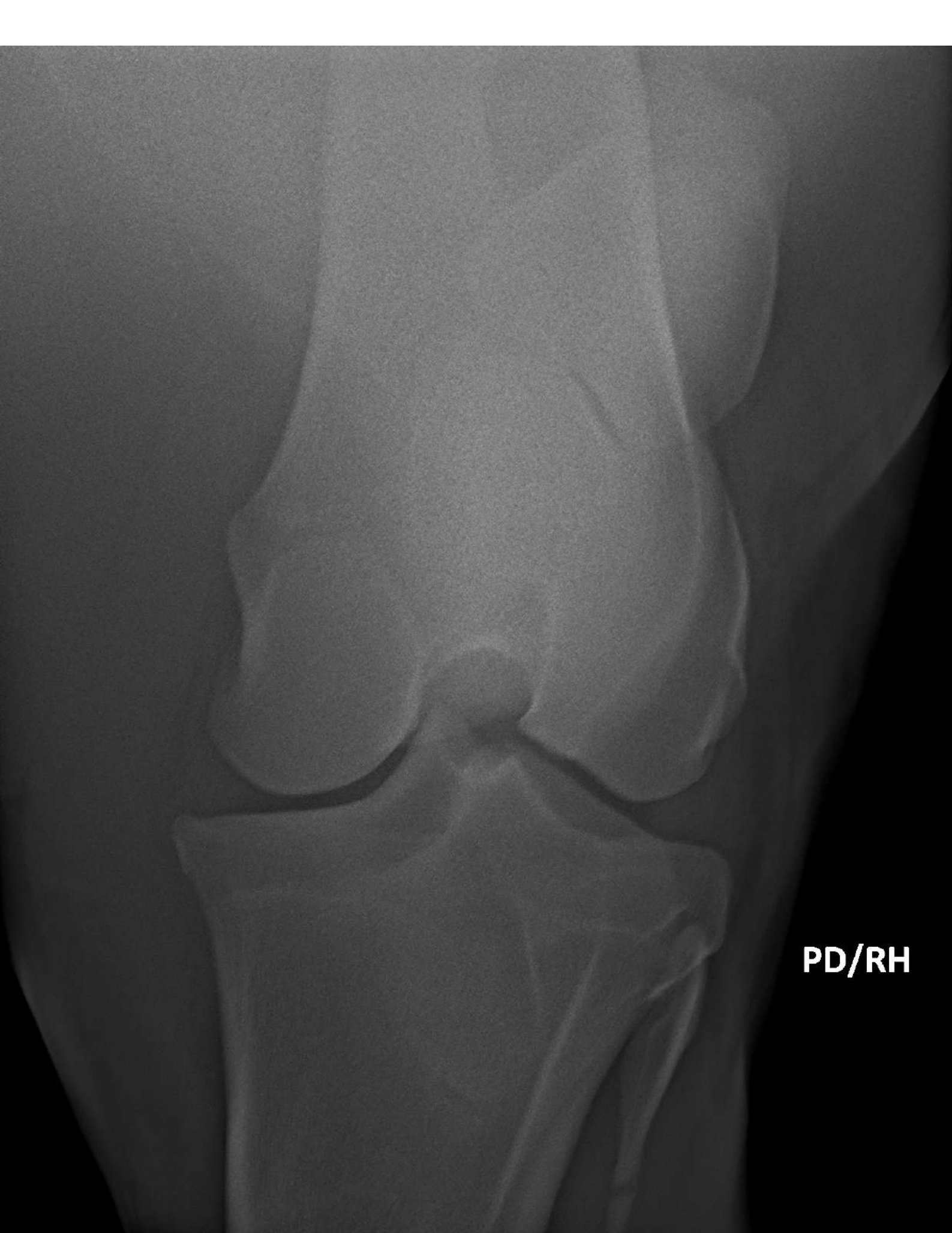
PD/RH



PD/RH

**LE CHEF MOUCHE SIJU
ELEVAGE DE SIJU**

**11/18/2024 12:00:00 AM
GRASSET PROFIL DROIT**



PD/RH



AG/LF

LE CHEF MOUCHE SIJU
ELEVAGE DE SIJU

11/18/2024 12:00:00 AM
PIED FACE GAUCHE



AG/LF

This is a lateral radiograph (X-ray) of a horse's lower leg and hoof. The image shows the distal radius and ulna at the top, the cannon bone (metacarpal III) in the middle, and the distal tarsals and metatarsals at the bottom. The hoof wall and sole are visible at the very bottom. The text 'AG/LF' is printed in white on the left side of the image.

LE CHEF MOUCHE SIJU
ELEVAGE DE SIJU

11/18/2024 12:00:00 AM
PIED PROFIL GAUCHE



AD/RF

This is an anteroposterior (AP) radiograph of a horse's lower leg and hoof. The image shows the distal radius and ulna at the top, followed by the cannon bone (metacarpal III). Below the cannon bone is the fetlock joint, which includes the proximal and distal sesamoid bones. The hoof wall and coronary band are visible at the bottom. The text 'AD/RF' is printed on the left side of the image.

LE CHEF MOUCHE SIJU
ELEVAGE DE SIJU

11/18/2024 12:00:00 AM
PIED FACE DROIT



AD/RF

LE CHEF MOUCHE SIJU
ELEVAGE DE SIJU

11/18/2024 12:00:00 AM
PIED PROFIL DROIT